

AGLS

A Great Lighting Stage

222 Lake Street, Oak Park, IL 60302

Phone: (708) 763-0541

Fax: (708) 763-0548

www.agls.biz



Welcome to AGLS

Dear Friends,

Welcome to the AGLS Production Services Guide. You will find all the information that you will need for successful location and studio production in the Chicago Metro area. No matter what you're shooting, from feature films to music videos, we understand that your focus is on quality and the bottom line. Speak with any of our clients. You'll find that at AGLS, we've got you covered.

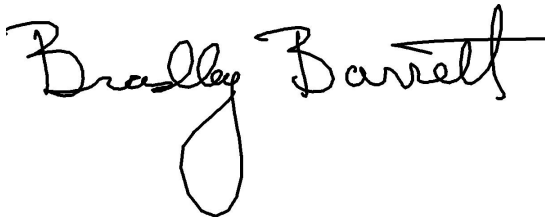
This guide will introduce you to the features of the 4,250 sq.ft. AGLS sound stage and its associated 2,000 sq. ft. production space, our 8 ton grip and lighting truck, and the amenities of historic Oak Park.

When shooting on our sound stage, AGLS offers, but does not require, the convenience of having an in-house gaffer. Whether it's on stage or on location, we work with the best crews that Chicago has to offer. With over 25 years of experience, we have the confidence that AGLS offers the best possible service and equipment at very competitive rates.

The staff and I will help to raise the quality of your production by offering more than equipment. Every stage rental and lighting package comes standard with hustle, heart, and a thorough knowledge of the industry.

We look forward to providing you with service beyond your expectations.

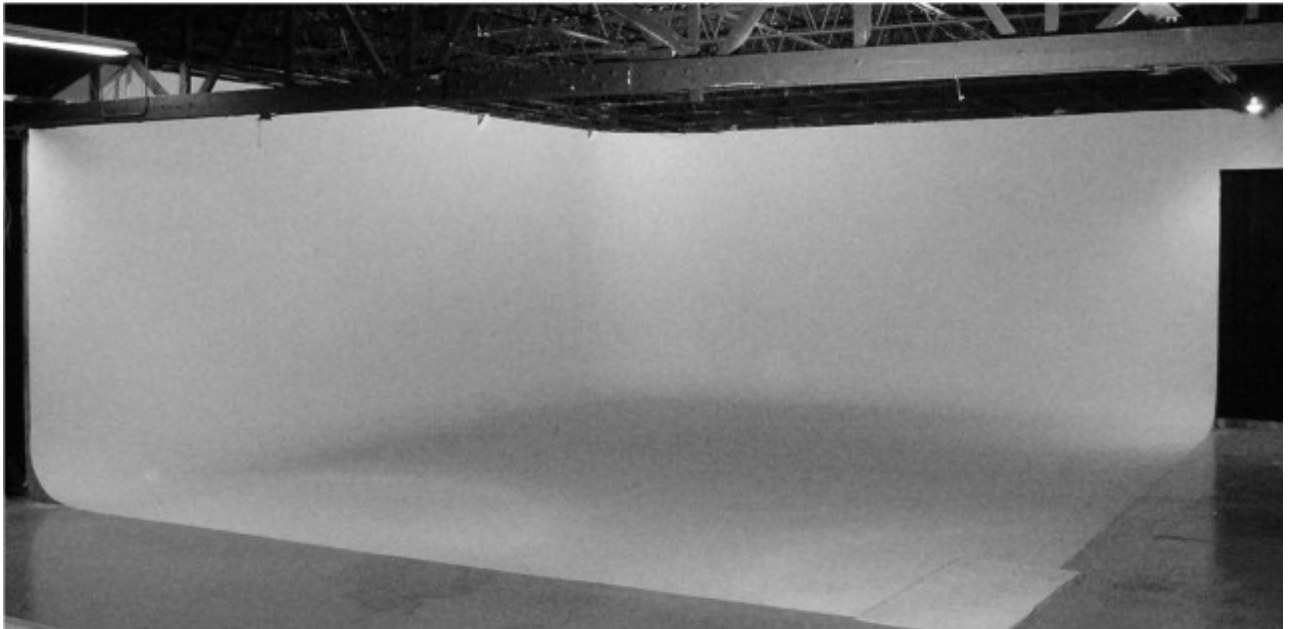
Happy Shooting,

A handwritten signature in black ink that reads "Bradley Barrett". The signature is written in a cursive style with a large, looped initial "B".

Bradley Barrett

Table of Contents

Stage Information	Page 1
8 Ton Truck	Page 3
Gaffer Information	Page 5
Local Area Information	Page 6
Chicago Map	Page 7
Directions	Page 8



Stage Information

Stage

Dimensions: 85' x 50' (4,250 Sq. Ft. - See Floor Plan)
16' Clear Height to Trusses
45' x 35' x 16' High 2-Walled Hard CYC *
* CYC is furnished pure white and must be in same condition at end of rental

Features: Air Conditioning System
800 Amps Electrical Service
Loading Dock with Ramp
Load-In/Drive-In Dock
Lighting Packages Available
45' Studio Curtain Shooting Background

Production Area

Dimensions: 50' x 40' (2,000 Sq. Ft. - See Floor Plan)

Features: Restaurant-Style Kitchen with Espresso Machine
Laundry Facilities with Shower
Production Office
Conference Room
Air Conditioning
Phones
Fax Machine
High-Speed Wireless Internet
Six 8' Tables and 32 Chairs

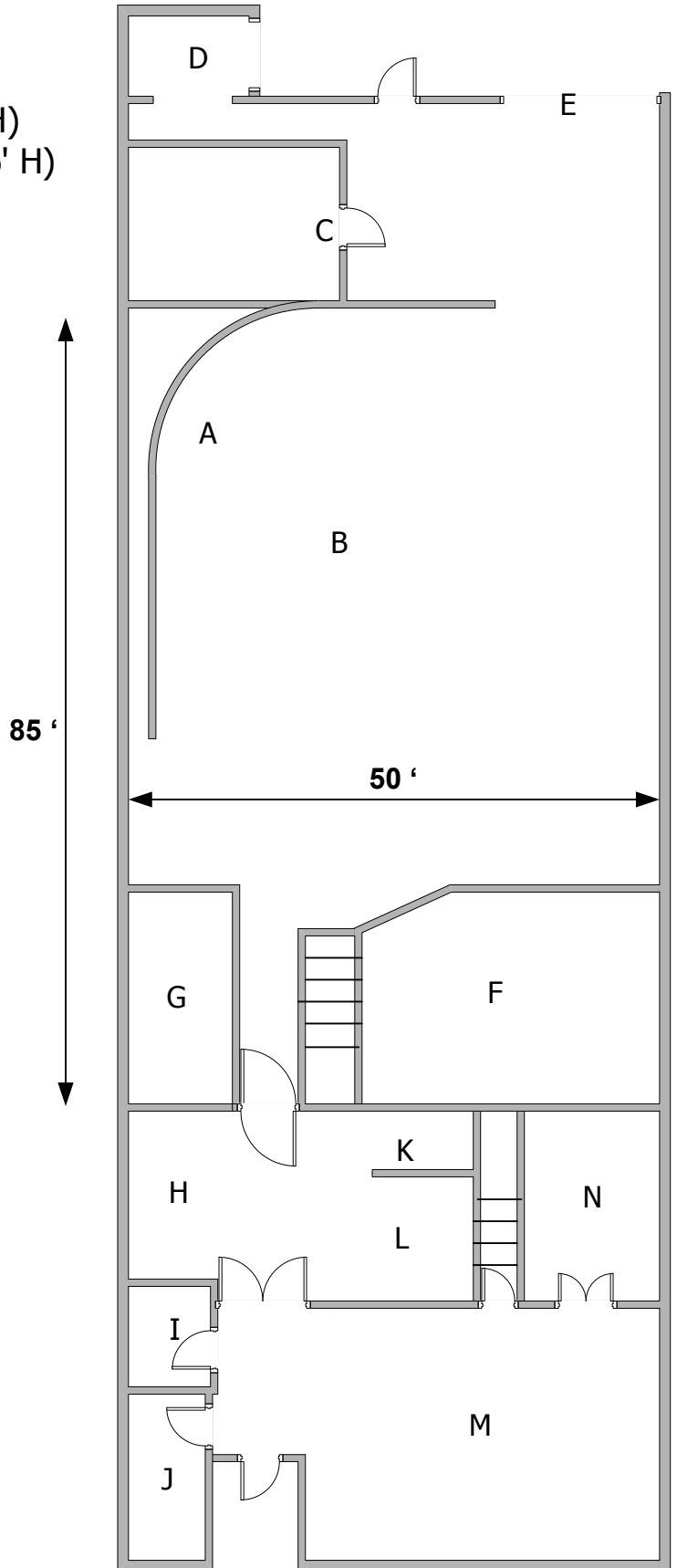
Rates

Basic Day: 8:00 am - 6:00 pm

Shoot or Pre-light	\$1250/day
Prep or Strike	\$1000/day
Overtime	\$125/hour
Rubbish Disposal	\$50
Power: Shoot or Pre-light	\$250/day

Stage Layout

- A - 2 Wall Cyclorama (45' L x 35' W x 16 H)
- B - 4,250 Sq. Ft. Stage (85' L x 50' W x 16' H)
- C - Carpenter / Grip / Electric Shop
- D - Loading Dock (12' L x 9' W x 8' H)
- E - Load-In/Drive-In Dock (16' W x 14' H)
- F - Observation Area
- G - Utility Area
- H - Restaurant-Style Kitchen
- I - Bathroom / Shower / Laundry
- J - Bathroom
- K - Production Office
- L - Conference Room
- M - Reception Area / Daylight Stage
- N - AGLS Office



8 Ton Truck

\$1250/day, \$1/mile - Must use AGLS approved driver

HMI Lights

- 1 - 6K HMI
- 2 - 4K HMI
- 2 - 2500 HMI
- 2 - 1200 HMI
- 2 - 1200 Par HMI
- 2 - 575 HMI

Tungsten Lights

- 1 - Tenner (10K)
- 2 - Senior (5K)
- 4 - Junior (2K)
- 6 - Baby (1K)
- 4 - Tweenie (650 W)
- 4 - Midget (200 W)
- 2 - Mini-Mole (200 W)
- 4 - Pepper (100 W)

- 6 - Mighty (2K)
- 4 - Mickey (1K)
- 2 - Teenie-Mole (650 W)

- 1 - 4K Zip
- 2 - 2K Zip
- 2 - 650 W Zip

- 4 - Nook
- 2 - Nine-Light
- 1 - K-5 Kit
- 1 - Baby Focal Spot

Grip Equipment

- 24 - C-Stand
- 2 - Lo-Boy C-Stand
- 1 - Cine-Vator Stand
- 3 - Crank-O-Vator Stand
- 7 - Combo Stand
- 8 - Jr Stand
- 6 - Rolling Jr Stand

- 1 - Lo-Boy Rolling Jr Stand
- 2 - Jr Extension
- 13 - Baby Stand
- 8 - Rolling Baby Stand
- 1 - Lo-Boy Rolling Baby Stand
- 1 - Bolt Cutter
- 5 - C-Arms (Extra)
- 2 - 2" Baby Riser
- 5 - 6" Baby Riser
- 2 - 12" Baby Riser
- 1 - Junior Three-Way
- 1 - Baby Three-Way
- 4 - Jr Lollipops
- 4 - Gobo Heads (Extra)
- 4 - Cardallinis
- 5 - Mafer
- 2 - Gator Grip
- 2 - 2x4 Splices
- 4 - Wall Spreaders
- 3 - 2x4 Holder
- 2 - 2x4 Holder W/ Speed Ear
- 3 - Magic Arms
- 3 - Putty Knife w/ Baby Spud
- 4 - Scissor Clips
- 2 - Baby 90°
- 2 - Small Pulley
- 4 - Speed Rail Bases
- 9 - Speed Rail Split
- 8 - Speed Rail Tees
- 9 - Speed Rail Crosses
- 9 - Jr Pipe Clamp
- 17 - Baby Pipe Clamp
- 2 - 5" Jr C-Clamp
- 1 - 6" Baby C-Clamp
- 2 - 5" Baby C-Clamp
- 4 - 4" Baby C-Clamp
- 1 - 2.5" C-Clamp
- 2 - 3" C-Clamp
- 2 - 4" C-Clamp

- 1 - 2.5" U-Clamp (C-Clamp)
- 10 - Baby Base Plate
- 3 - 90° Baby Base Plate
- 4 - Jr Base Plate
- 1 - Jr Set Wall Bracket
- 1 - C-Boom
- 2 - Speed Rail Ear
- 4 - Tree Branch Holder
- 3 - Jr Drop Down
- 2 - Jr Side Arm
- 2 - Jr 45° Side Drop Down
- 6 - Baby Side Arm
- 2 - Baby Drop Down
- 3 - Bead Board Holder
- 2 - Jr 90°
- 7 - Frame Holder
- 5 - Frame Ear
- 4 - Baby Chain Vice Grip
- 6 - Apple Box Family
- 3 - Full Apple Box
- 6 - Half Apple Box
- 2 - Quarter Apple Box
- 1 - Western Dolly

Flags, Nets, Frames, and Reflectors

- 4 - 18x12 Solid
- 2 - 18x12 Single
- 2 - 18x12 Double
- 2 - 18x12 Silk

- 5 - 18x24 Solid
- 2 - 18x24 Single
- 2 - 18x24 Double
- 2 - 18x24 Silk
- 1 - 18x24 Cookie

8 Ton Truck

Expendables are billed on a per-use basis

Additional Lights available upon request

6 - 24x36 Solid
2 - 24x36 Single
2 - 24x36 Double
2 - 24x36 Silk
1 - 24x36 Cookie

1 - 2x2 Mirror
2 - 1x1 Mirror
4 - 1x1 Broken Mirror
3 - 2x2 Empty Frame
1 - Finger & Dot Kit
1 - 42x10 Solid
1 - 44x14.5 Solid
1 - 24x30 Solid
2 - 24x72 Solid

8 - 4x4 Frames
3 - 4x4 Solid (Floppy)
1 - 4x4 Single
1 - 4x4 Double
2 - 4x4 Silk
1 - 4x4 Griffon
1 - 4x4 Celo Cookie
4 - 4x4 Silver Reflector

2 - 6x6 Frames
2 - 6x6 Solid
2 - 6x6 Single
2 - 6x6 Double
2 - 6x6 Silk
6 - 6x6 Griffon
1 - 6x6 Bleached Muslin
1 - 6x6 Unbleached Muslin

1 - 12x12 Frame
1 - 12x12 Solid
2 - 12x12 Single
1 - 12x12 Double
1 - 12x12 Silk
2 - 12x12 Griffon
1 - 12x12 Bleached Muslin
1 - 12x12 Unbleached Muslin

1 - 20x20 Frame
1 - 20x20 Solid
1 - 20x20 Single
2 - 20x20 Silk
2 - 20x20 Griffon

Miscellaneous Equipment

10 - Furniture Pad
28 - Pony Clamp (Spring Clamp)
1 - Large Pony Clamp
8 - Small Pony Clamp
1 - Crate Of Wedges
1 - Crate Of Cribbing
1 - Crate Of Extra Scrims
1 - 4' Ladder
1 - 6' Ladder
1 - 8' Ladder
9 - Sand Bag
20 - Shot Bag
1 - Pick Ax
1 - Ax
1 - Sledge Hammer
1 - Hack Saw
1 - Saw
2 - 10" C-Clamp
6 - Safety Cones
1 - Shovel
1 - Rake

2 - Broom
1 - Dust Pan
1 - Power Limb Trimmer
3 - 4' Level
1 - 2' Level
1 - Sun Umbrella
1 - Hi-Hat
1 - Magliner

Expendables

6 - B/W Artcard
8 - 4x8 B/W Foamcore
3 - Gold Artcard
4 - Silver Artcard
2 - 4x8 Sheet of Plywood (3/4")
Correction Gels
Diffusion Materials

Electrical Equipment

1 - 200 Amp Breaker Box
1 - 200 Amp Breakout Box
10 - 2 Wire Paddle Box
10 - 3 Wire Paddle Box
6 - Paddle to Quad
7 - Paddle to Single Edison
35 - Threefeers
6 - Mole 3-Way
3 - Mole "Y"
5 - Stage Paddle to
 Female Mole "Y"
2 - Mole Extensions
2 - Male to Male Mole
2 - Female to Female Mole
4 - Bus Bars
Tie-Ins
4 - Dimmers (7.5 Amp)
Zip Cord

Gaffer Information

Brad Barrett

Experience

Lighting Director: Over 25 years of experience lighting for film & video: Feature films, TV shows, commercials, corporate communications, and Music Videos.

Film Credits: Suspended Animation, The Reversal, Cypress Edge, Cold Night Into Dawn, Butch Camp, The Homecoming

Television Credits: Univision Christmas Special, Michael Essaney cable show, Shania Twain live national broadcast, Chef Karen cooking show, Wine Degustation of the World series show on location in Southern Australia, One Holy Night aired nationally on CBS, MTV's Prom Date Reality Show, 20 Bally's Fitness Videos, NFL Promo - The Dating Game featuring Brian Urlacher of the Chicago Bears, Super Fans Skits With George Wendt, Chris Farley, and John Goodman

Commercial Credits: Comcast featuring Ben Gordon of the Chicago Bulls, Lovie Smith of the Chicago Bears, Friendly's Ice Cream, Aldi's, Majestic Star Casino, Wind Walkers Motorcycles, Carson's, Home Run Inn Pizza of Chicago, and multiple health care commercials

Music Video Credits: R. Kelly, Puddle of Mudd, Skid Row

Production Company References

Bergstrom and Taghert: Contact Nicole Taghert at 312-337-2848

Chicago Story: Contact Mark Androw at 312-642-3173

Robbins Productions: Contact Steve Robbins at 773-975-7333

Additional references available upon request.

Relevant Work History

AGLS Enterprises
222 Lake Street, Oak Park, IL 60302
Stage Owner and operator
25 years

Rate: \$550/day for 10 hours

Local Information

Oak Park Chamber of Commerce

1110 North Boulevard
Oak Park, IL 60301
(708) 848-8151

West Suburban Hospital

518 N. Austin Boulevard
Oak Park, IL 60302
(708) 386-0810

Boston Coach

(800) 672-7676
www.bostoncoach.com

Blue Cab Company

1100 South Boulevard
Oak Park, IL 60302
(708) 660-0159

Dressel's Hardware

1137 Chicago Avenue
Oak Park, IL 60302
(708) 386-6843

Illinois Film Office

100 West Randolph Street, 3rd Floor
Chicago, IL 60601
(312) 814-3600
www.filmillinois.state.il.us

The Write Inn

211 N. Oak Park Avenue
Oak Park, IL 60302
(708) 383-4800
www.writeinn.com

The Carleton of Oak Park

1110 Pleasant Street
Oak Park, IL 60302
(708) 848-5000
www.carletonhotel.com

The Peninsula Hotel

108 East Superior Street
Chicago, IL 60611
(312) 337-2888
www.chicago.peninsula.com

The Pump Room Restaurant

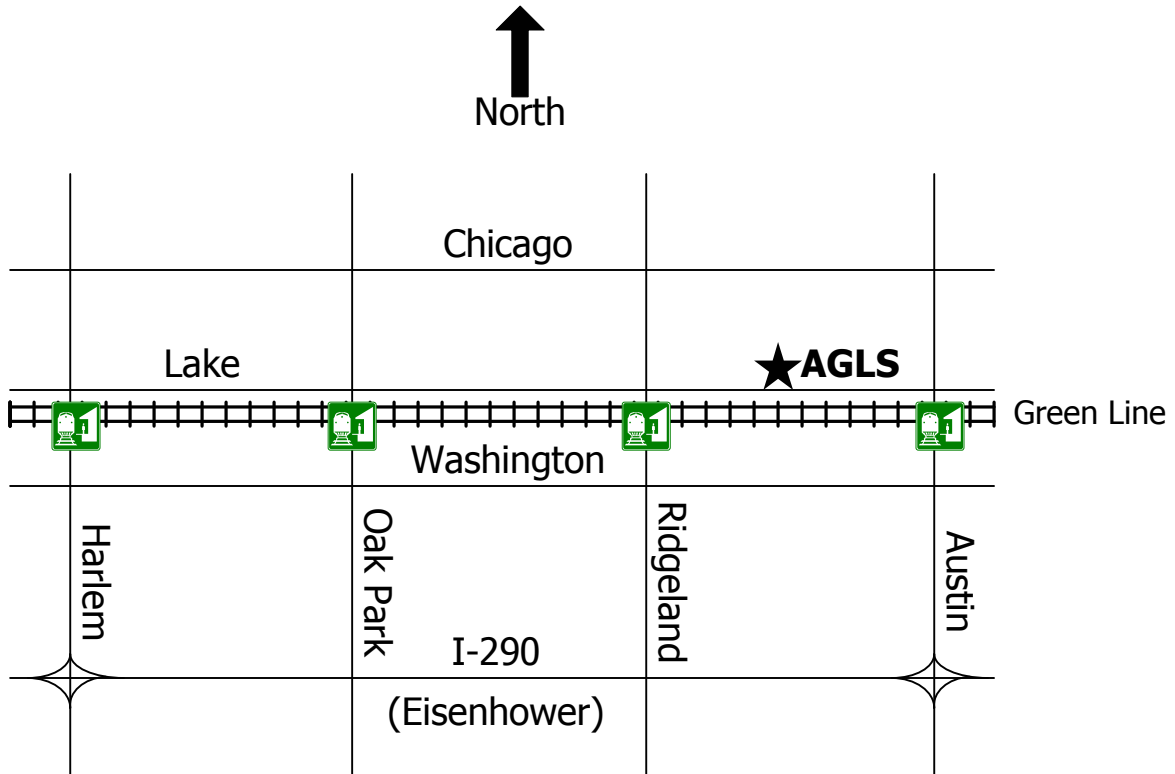
1301 North State Parkway
Chicago, IL 60610
(312) 266-0360

Chicago Area Map



Directions

222 Lake Street, Oak Park, IL 60302



Directions:

From Chicago: Take I-290 West to Austin. Turn Right (North) on Austin. Continue on Austin for 1.2 miles. Turn Left (West) on Lake. AGLS is 0.3 miles down on the right-hand (North) side.

From the West: Take 88 East to I-290 East. Turn Left (North) on Austin. Continue on Austin for 1.2 miles. Turn Left (West) on Lake. AGLS is 0.3 miles down on the right-hand (North) side.

From the Green Line: Get off the train at Ridgeland. Walk one block North to Lake Street. Turn Right (East). Walk 2 blocks. AGLS is on the North side of Lake Street.

Parking:

Permit parking is available on the side streets of Harvey and Lombard. You will receive a parking permit during your time at AGLS.